



# D1 20W Kit

USER MANUAL  
Version 1.0 • Dec 2024

Blank page

# Contents

Part 1: Packing List

Part 2: Mechanical Assembly

Part 3: Usage Tips

Part 4: Maintenance

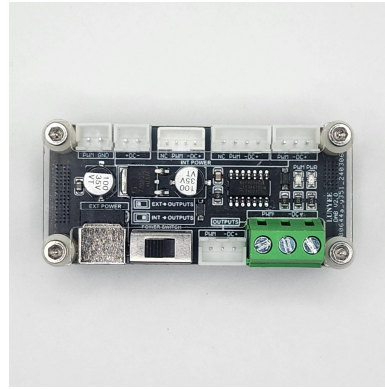
# Part 1 Packing List



Laser Module



Dovetail Parts



Adapter Board



Screw M3x4mm x7



Adapter Cable



Module Cable



Power Supply



Power Cord

Focus Block



## Part 2 Mechanical Assembly

### Step 1

Parts Required:

-----Laser Module

-----Dovetail Part

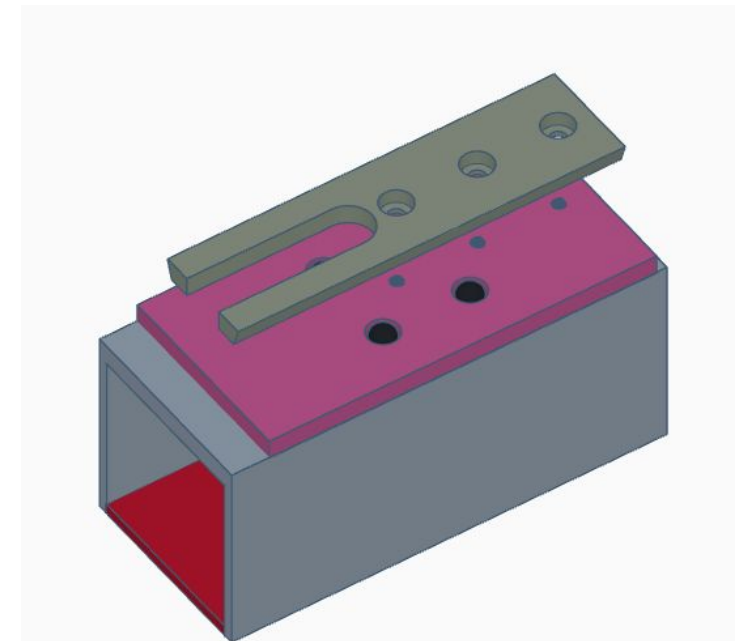
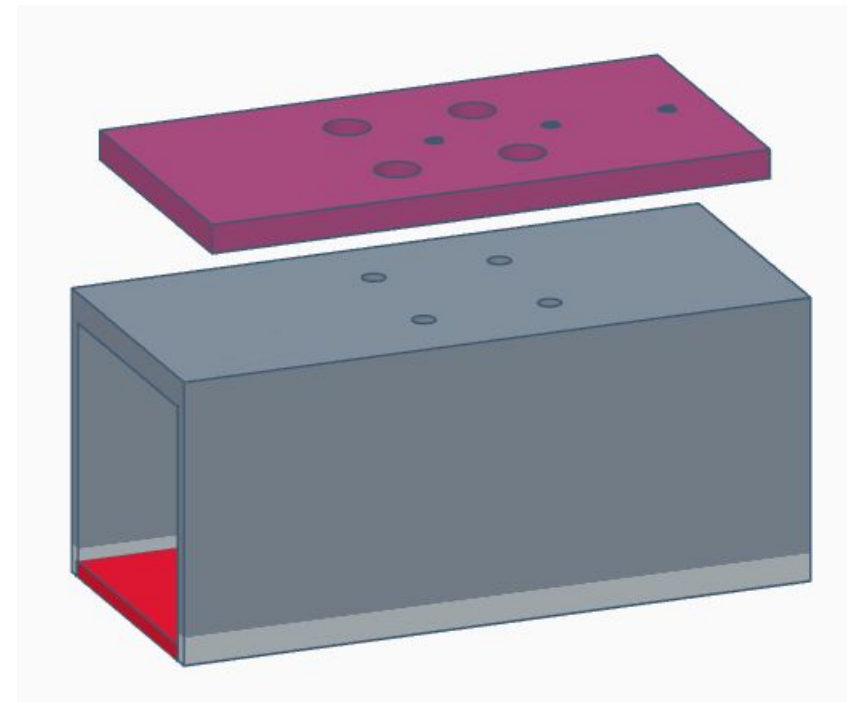
-----Screw M3x4 x7

-----Right Adapter Plate

- Assemble lower Dovetail Part with Laser Module using M3x4 x4 screws
- Assemble Upper Dovetail part with lower Dovetail Part using M3x4 x3 screws

**Note: Be careful to match the alignment of both Dovetail Parts in relation to the module. Screw heads should not protrude from Dovetail Parts**

Module is now ready to be mounted to your machine as usual



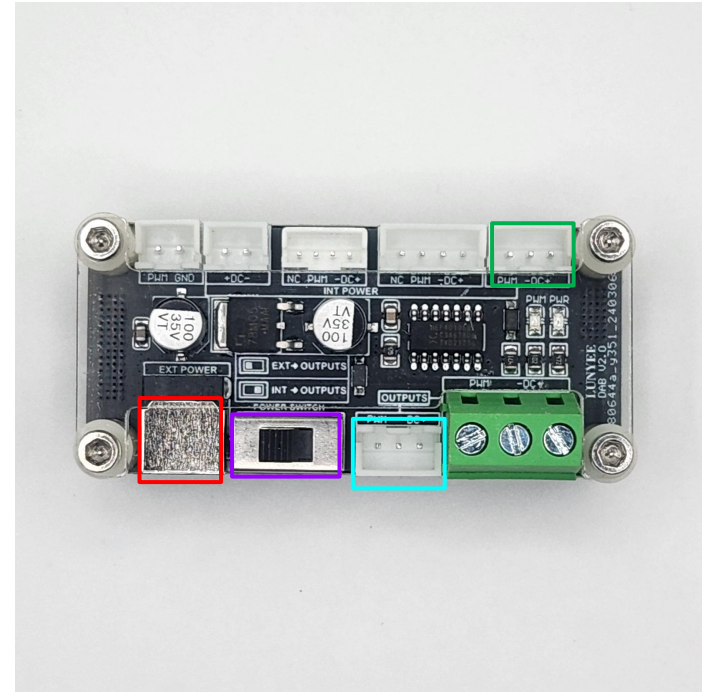
# Part 2 Mechanical Assembly

## Step 2

Parts Required:

- Adapter Board
- Adapter Cable
- Module Cable
- Power Supply

- Connect one end of the Adapter Cable to the **Adapter Board** and the other the D1 control board
- Connect Module Cable to **Adapter Board**
- Connect Power Supply to **Adapter Board**
- Make sure **switch** is to the left, EXT->OUTPUTS



## Part 2 Mechanical Assembly

### Step 3

Parts Required:

- Laser Module
- Module Cable
- M5x12 Screw x8
- Profile Nut x8

- Connect Module Cable to **Laser Module** (it only fits one way)
- If you have air assist, remove the cap and connect the air tube to the **Laser Module**



## Part 2 Mechanical Assembly

### Step 4

Parts Required:

-----Your xTool D1 with  
20W Upgrade

You're ready to go make some awesome stuff!





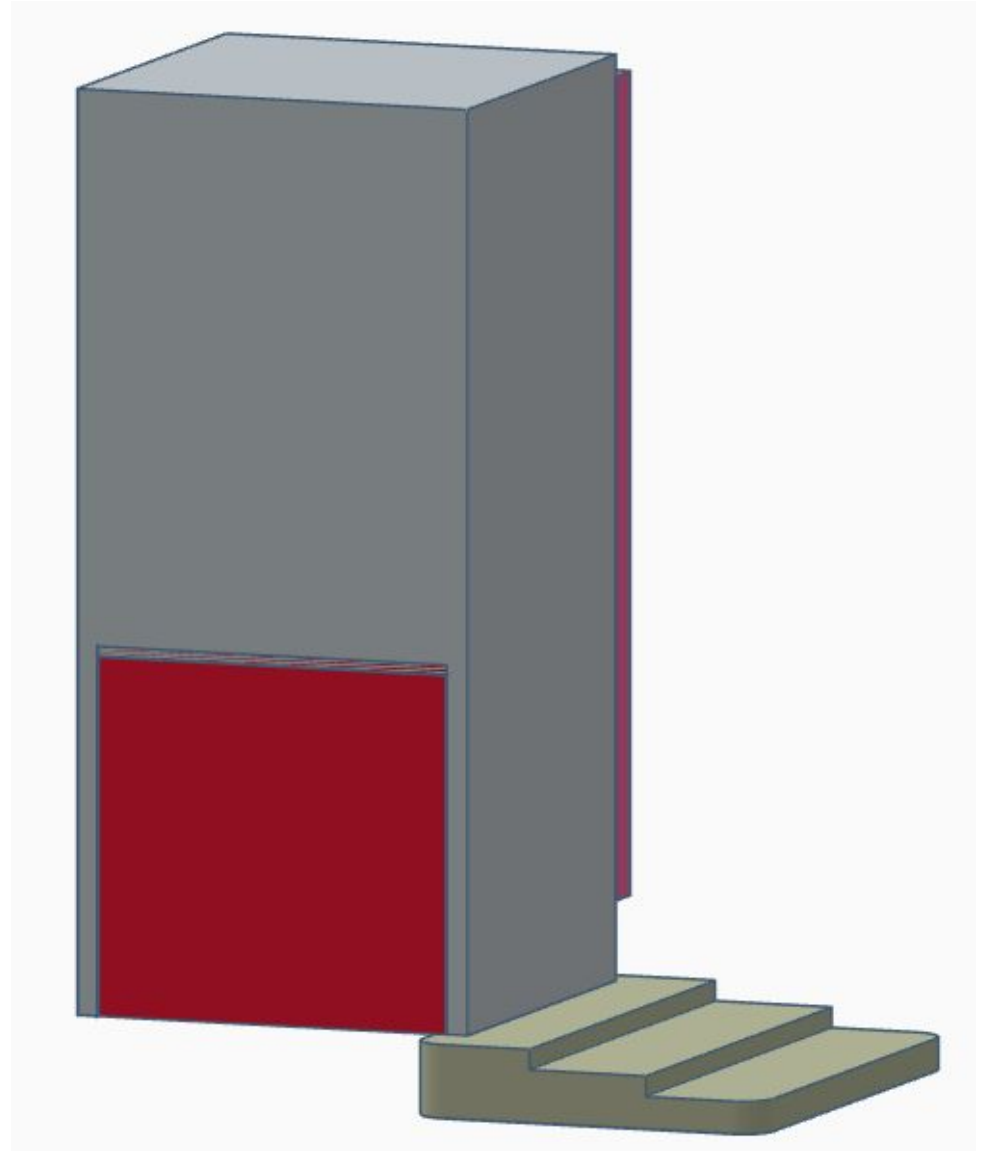
## Part 3 Usage Tips

### Focusing

Parts Required:

- Your xTool D1 with 20W Upgrade
- Focus Block

- Lower your module until the bottom edge just touches the top of the Focus Block.
  - This handles materials up to 15mm thick
- For materials 15-20mm thick, use the second step of the Focus Block
- For materials greater than 20mm thick, use the bottommost step of the Focus Block



## Part 3 Usage Tips

### Line Interval / DPI / Line per cm

- Your module has a dot size of 0.08x0.08mm in size which equates to:
  - 0.08 Line Interval
  - 318 DPI
  - 125 Lines per cm
- For some materials, such as wood, engravings may provide a better appearance by lowering the values to account for collateral damage
  - 0.1 Line Interval
  - 254 DPI
  - 100 Lines per cm

### Framing

- Your module does not have an external indicator for use during framing. Instead, use the laser dot itself. The beam will be visible through the front shield of the module.
  - Set to 1-5% power for framing
    - Some materials are very sensitive and may become marred by framing even with only 1% power
  - Be sure to disable any pointer offset previously used

# Part 4 Maintenance

## Cleaning and Care

- To clean the lens cover, unscrew the air assist nozzle. Use rubbing alcohol and cotton swabs, or, lens cleaning swabs, to remove dirt and debris from the lens cover. **BE GENTLE**
  - If lens cover cannot be cleaned or is cracked, it needs to be replaced
- To replace the lens cover, insert a medium to large screwdriver into the tabs of the retaining ring and unscrew it. Replace the lens cover with a new one, and reinstall the retaining ring. **BE GENTLE**
- To access the side fans, remove the four screws from the rear of the module. The outer cover will slide off.

Your module uses a 8mm lens cover glass. Replacements are available from [TwoTrees](#) (TTS-20/TTS-Pro 20) and other retailers

